

# MUTOH

# XpertJet 1462UF

## 1420mm x 700mm UV LED Flatbed Printer



## VerteLith

Powered by MUTOH's Award-Winning Genuine VerteLith™ RIP Software



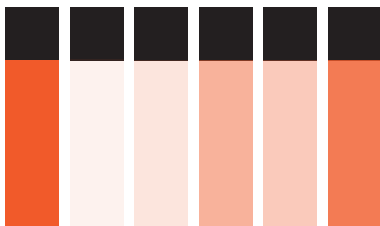
CMYK  
White, Varnish



Printable Size  
Max. 1420mm x 700mm



Media Thickness  
0-150mm



## LDC

UV LED LOCAL DIMMING CONTROL

The MUTOH XpertJet 1462UF UV LED flatbed printer with a moving gantry features a large 1420mm x 700mm printable surface area, two 100mm UV LED lamps, two piezo drop on demand dual print heads in a staggered configuration, and will print on objects up to 150mm thick. Legally prints ADA compliant braille and 2.5D layered prints to create fine textured art to add value to any print job.

Tie that in with MUTOH's Local Dimming Control Technology, and you now have the ability to add glossy finishes easily in one pass. With MUTOH's "Made in Japan Quality" and proprietary features such as the Automatic Nozzle Detection Unit and the Area Select function, the MUTOH XPJ-1462UF is the ideal printer for any print shop looking for reliability, high quality, and fast speeds.

Powering the XpertJet 1462UF UV LED flatbed printer is MUTOH's Award-Winning Genuine VerteLith™ RIP software.



TEXTURE & GLOSS VARNISH



ADA BRAILLE SIGNAGE



VARIABLE DATA



SIGNAGE

# MUTOH

# LDC

UV LED LOCAL DIMMING CONTROL

1420mm x 700mm printable area with ability to print objects up to 150mm thick.

Two 100mm UV LED lamps with dual staggered print heads

Four zone vacuum table

Rigid chassis and table bed

[www.mutoh-au.com](http://www.mutoh-au.com)



## MUTOH'S XpertJet 1462UF UV-LED Printer Delivers Both Unparalleled Productivity And High Image Quality.

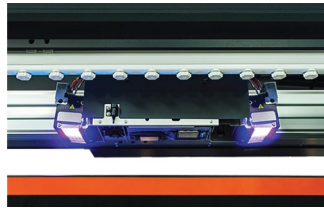
### MUTOH'S GENUINE RIP SOFTWARE VERTELITH™



Powered by MUTOH's Award-Winning Genuine VerteLith™ RIP Software, delivering unmatched quality output and additional efficiency of business workflow.

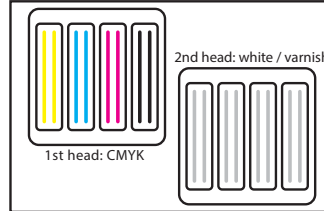
#### 100mm LED LAMPS

Newly developed 100mm wide UV LED lamps are mounted on both sides of the print heads and enable fast curing for bi-directional printing.



#### DUAL PRINT HEADS

Print head 1 prints CMYK. Print head 2 prints white & varnish which allows for faster printing of 2-layers, 2.5D texture and ADA compliant braille signage.



#### RIGID CHASSIS

The highly rigid, precision built chassis and rail mechanism ensure accurate dot placement for reliable high-quality printing.



### FULL RANGE OF OPERABILITY

Vacuum holes and screw holes outside the markings can be used as screw holes to secure custom jigs.



Foot switch for remote on/off operation of the vacuum.

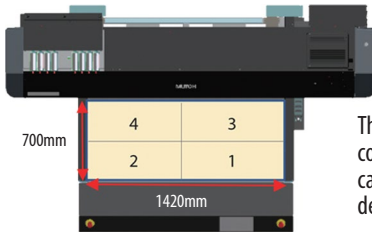


Signal tower light for checking printer status at a glance even from a distance.



### PRINT A WIDE RANGE OF MATERIALS

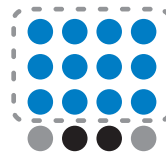
The XPJ-1462UF offers a large table area capable of printing up to 1420mm x 700mm and objects up to 150mm thick while holding weight of 50kg per m<sup>2</sup>. Cover a wide range of applications from large signage to small promotional products, all with shorter print times resulting in improved productivity.



The print table has 4 individually controlled vacuum zones that can be adjusted from the dedicated control panel.

### NOZZLE AREA SELECT

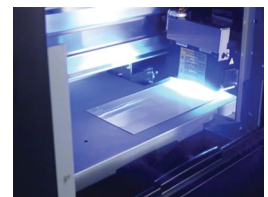
Auto-nozzle checking unit and Nozzle Area Select automatically detects missing nozzles and performs a nozzle cleaning. Nozzle Area Select temporarily prints using selected area of active nozzles when clogged nozzles may fail to recover.



## Nozzle Area Select

### NOZZLE CHECK AREA

Nozzle check can be performed at any time by setting the media in a dedicated area outside the print table. Even after the print media or print jig has been set, a print test can be performed smoothly without having to redo the height detection.



### XPERTJET 1462UF SPECIFICATIONS

Printer model	XPJ-1462UF
Printing system	On-demand piezo drive system
Print head	Number 2 (staggered)
	Type UV LED ink (UH21)
	Ink capacity 800ml bag/500ml bag (UH21 white ink only)
	Configuration 6
Ink	Colour CMYK+Wh+Va
Printable area	1,420mm x 700mm
Supported media size	1,420mm x 700mm
Max. media thickness	150mm

Max. media weight	50kg/m <sup>2</sup>
Height adjustment	Automatic
Print resolution	Max. 1440 x 1440dpi
Interface	GB-Ethernet (1000BASE-T)
Dimension W x D x H (mm)	2,770mm x 1,459mm x 1,339mm *front cover closed and ink bags are not loaded
Weight	500kg
RIP software	MUTOH genuine RIP software, VerteLith
Optional	Ionizer

# MUTOH

Mutoh Australia Pty Ltd  
Unit 19 / 76 Reserve Road, Artarmon NSW 2064  
ph: 02 9437 1366 e: sales@mutoh-au.com

Distributed by:

[www.mutoh-au.com](http://www.mutoh-au.com)