



Media width  
Max.1625mm



CMYK

# XpertJet 1641SR Pro

Eco Solvent Inkjet Printer

The best-balanced model  
for high image quality and high productivity

## Productivity comparison with conventional model

\*in-house comparison in the same level of image quality

Graphic2 Conventional model (XpertJet 1641SR) 8.03(m/h)

High speed XpertJet 1641SR Pro 15.5(m/h)

Unlocking  
Productivity

The MUTOH XpertJet series delivers outstanding print quality and high productivity. The XpertJet 1641SR Pro inherits a platform designed to improve operability and reduce operational workload. It is an uncompromising standard model that balances high image quality and high productivity by adopting a new printhead.

The MS41 eco-solvent ink paired with the printer excels in colour development, weather resistance, and ease of maintenance. The ink has been certified UL GREENGUARD Gold, making it environmentally and also operator friendly.

The XpertJet 1641SR Pro brings the best "Made in Japan Quality" to various markets such as banners, trade show graphics, indoor and outdoor signs, POP displays, vehicle wrap and more.



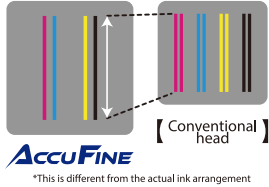
# MUTOH “Made in Japan Quality”

## The integration of three features enables high quality printing

### New print head “AccuFine”



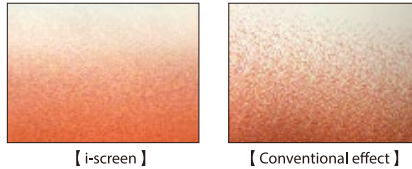
“AccuFine” is a new extra wide and high density piezo print head. It achieves high productivity and high image quality thanks to extremely precise ink dot placement.



### New print effect “i-screen”



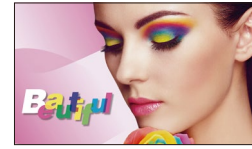
“i-screen” is created by evolving MUTOH’s “Intelligent Interweave” printing technology. By arranging the dots in a way that takes into account how they look, this reduces banding for smoother print images.



MUTOH genuine RIP software



“VerteLith” optimizes the performance of the XpertJet 1641SR Pro, and delivers unmatched quality outputs and the efficiency of business workflow.

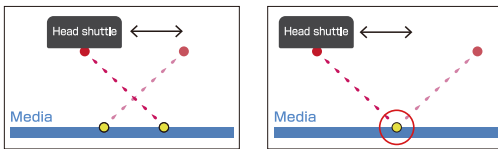


The MUTOH original halftone technology delivers better skin tones with smoother gradation and less variation in colour density

## MUTOH’s unique technologies for automation and efficiency

### Automatic Bi-D adjustment “DropMaster 2”

A built-in sensor on the carriage automatically calibrates bi-directional alignments, and saves time and reduces validation in adjustment among different operators.



### Automatic media feed adjustment ”FEED MASTER”

By printing a print pattern and reading it with a sensor, paper feed correction is performed automatically.



### Nozzle selection function “Nozzle Area Select”



Nozzle area select temporarily prints using selected areas of active nozzles when clogged nozzles fail to recover. It is a reliable function that ensures seamless operations.

### Media roll balance management “Media Tracker”



Media tracker manages the remaining media by printing barcodes before removing a roll in use. It will read the barcode when reloading that roll. Streamlines management of remaining capacity for multiple media.

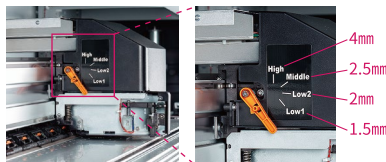
### Automatic nozzle checking unit (optional)

It is available to add a module to the print head that can optically monitor the ink injection. Automatically detects nozzle missing and performs nozzle cleaning. If nozzles are not recovered, the Nozzle Area Select automatically activates to continue printing.

## High media handling and transport

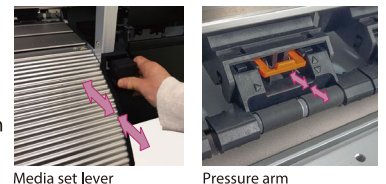
### 4 step PG setting

Select optimal head height setting to reduce the risk of print head contact and maintain stable print quality.



### Multi-stage pressurizing mechanism

Four levels of pressure applied to the media thanks to adjustable media set lever and pressure arms expand media feed capability. Partial pressure cancel mechanism is effective in preventing media cockling.



## Specifications

Print head	Print method	On-demand piezo drive system
	Head height	Low1: 1.5mm, Low 2: 2.0mm, Middle: 2.5mm, High: 4.0mm
Media	Maximum roll media width	Maximum: 1,625mm Minimum: 500mm
	Maximum media thickness	Low1:0.3mm, Low2:0.8mm, Middle:1.3mm, High:2.8mm *1mm or less is recommended.
	Diameter	Φ200mm or less
Maximum printable width	1,615mm	
Ink	Type	Eco solvent ink
	Colour	4 colours (Black, Cyan, Magenta, Yellow)
	Amount	1000ml bag/300ml bag
Print resolution	Maximum 1200dpi	
Interface	Gb-Ethernet (1000BASE-T)	

Power supply	Printer	Voltage: AC 100V~120V ±10% / AC 200V~240V ±10% Frequency: 50/60Hz ±1Hz
	heater	Voltage: AC 100V~120V ±10% / AC 200V~240V ±10% Frequency: 50/60Hz ±1Hz
Environmental condition	Printer operation	Temperature: 20°C~32°C Humidity: 40%~60% No condensing
Power consumption	Operation	AC100V~120V/AC200V~240V, 1100W or less
	Sleep mode	AC100V~120V/AC200V~240V, 30W or less
External dimensions (W)x(D)x(H)	Printer with stand: 2,770mm x 895mm x 1,428mm (when cover closed) 2,770mm x 895mm x 1,527mm (when cover opened) When ink case is installed: 2,770mm x 895mm x 1,611mm	
Weight	Printer: 141kg Stand: 32kg	
RIP Software	VerteLith (MUTOH genuine RIP software)	



Mutoh Australia Pty Ltd | Unit 19 / 76 Reserve Road, Artarmon NSW 2064  
ph: 02 9437 1366 e: sales@mutoh-au.com | web: www.mutoh-au.com