

# MUTOH



# VerteLith

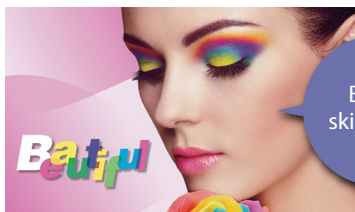


## Genuine RIP Software Achieves Unmatched Image Quality and Workflow Efficiency

High Quality Technology to optimize  
the performance of MUTOH printers

### MUTOH Clear Tone Original half tone technology

Less variation in colour density  
and smoother gradations



Better  
skin tones

MUTOH Clear Tone

### MUTOH CMYK Wide colour gamut profile

ICC input profile "MUTOH CMYK"  
maximizes the coverage of colour gamut



Enlarged  
colour  
gamut

Japan Color 2011

### Accurately process PDF transparencies

More reliable output by accurate process-  
ing of PDF transparencies & drop shadows



VerteLith  
processing

Improper  
processing

## Two Preview Functions to reduce mistakes and waste

### RIP preview

Preview "the actual printing dots" on screen before printing



Even  
the variable dots  
are previewed  
for  
confirmation

### Soft proof

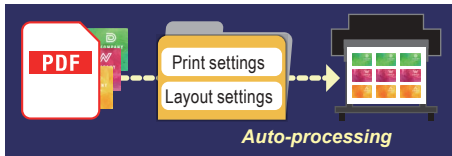
Simulate "the colour" of the printed image  
on screen before printing



# Workflow Efficiency

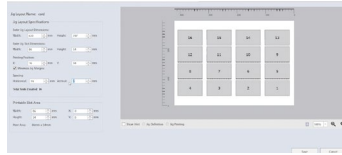
## Automated layout processing and printing with Multi-page PDF

Prepare an integrated multi-job PDF  
In addition to "Print settings", "Layout settings" can be also set in the hot folders



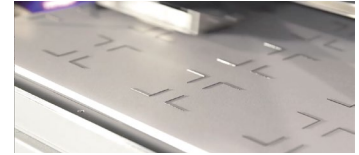
## Jig layout function

Set the layout information including placement information



## Simplified jig production with 2.5D printing

Save time and money with MUTOH's automated Jig production



# Efficient Multi-Layer Printing

## Automated multi-layer printing with Multi-page PDF

Pre-set multi-layer print settings. Prepare a PDF with layers divided into pages. In addition to "Print settings" and "Layout settings", "Layer settings" can be also set in the hot folders



## Auto-generation of spot colours

Auto-generation of spot colours based on the shading of the image data  
Select from 6 different modes



### Operating environment

OS	Windows 11, Windows 10 [64bit], Windows 8.1 [64bit]	
CPU	Intel® Core™ i5 3GHz or better	
Memory	8GB or more	
Hard Disk	HDD or SSD	SSD is recommended when output to multiple machines 10GB or more *1
Interface	Ethernet *2	USB 2.0 *3
Display resolution	1920×1080 pixel or higher *4	

\* 1 When using the archive function, secure sufficient capacity.  
\* 2 It is recommended to have a network port that supports Gigabit Ethernet, which is required when connecting to a printer equipped with Gigabit Ethernet.  
\* 3 Recommended when using a USB-connected cutter and a spectrophotometer.  
\* 4 For soft proofing, a display with monitor calibration is recommended.

The following major models are scheduled to be supported in succession.

Please contact your dealer for the detailed schedule.

Printer	XPJ-1641SR Pro, XPJ-1341SR Pro, XPJ-1682SR XPJ-1641SR, XPJ-661UF, XPJ-461UF, VJ-626UF VJ-426UF, VJ-1638UR/UR2, VJ-1638UH/UH2 VJ-2638X, VJ-1938X, VJ-1638X, VJ-1324X, VJ-628 VJ-628MP, VJ-1627MH, VJ-1628MH	
Cutter	ValueCut II	VC2-600, VC2-1300, VC2-1800
	ValueCut	VC-600, VC-1300, VC-1800
Supported data	PDF1.7/2.0, PostScript, EPS, TIFF, JPEG	

# MUTOH

MUTOH Australia Pty Ltd  
Unit 19 / 76 Reserve Road  
Artarmon NSW 2064  
ph: 02 9437 1366  
e: sales@mutoh-au.com  
web: www.mutoh-au.com



### Safety Precautions

Before the use of our products, please read the entire Operations Manual to ensure safe operations.

The name of company and products mentioned are trademarks or registered trademarks. The standard prices in the catalog include no sales taxes, which must be individually determined. Specifications and outward appearances of any product therein may be changed without notice as a result of product improvement or other related reasons.

Distributed by: